

# Tax Timeline 2016-17



## 31ST JANUARY 2016

- Tax return (2014/2015) online submission deadline
- Tax liability (2014/2015) due
- First payment on account (2015/16) due



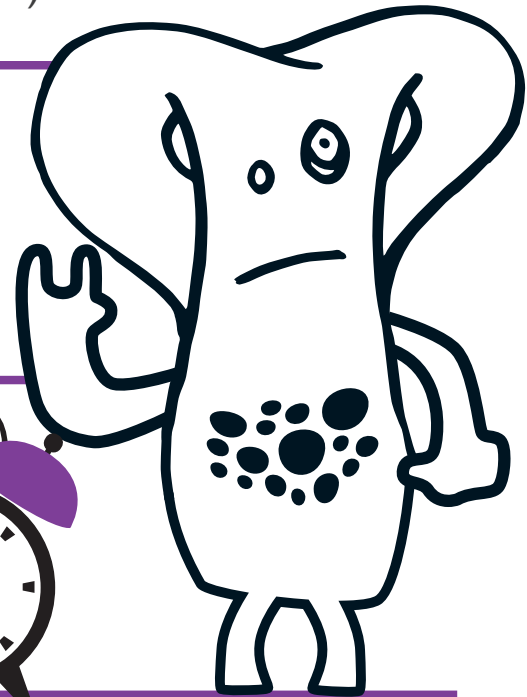
## 6TH APRIL 2016

- New financial year begins



## 31ST JULY 2016

- Second payment on account (2015/16) due



## 31ST OCTOBER 2016

- Paper tax return submission (2015/16) deadline



## 31ST JANUARY 2017

- Tax return (2015/16) online submission deadline
- First payment on account (2016/17) due

Interested in finding out more? Say hi to the friendly Cinch team on: 0114 478 935 or email [tax@thecinchgroup.com](mailto:tax@thecinchgroup.com)

**cinch**

We see to it.